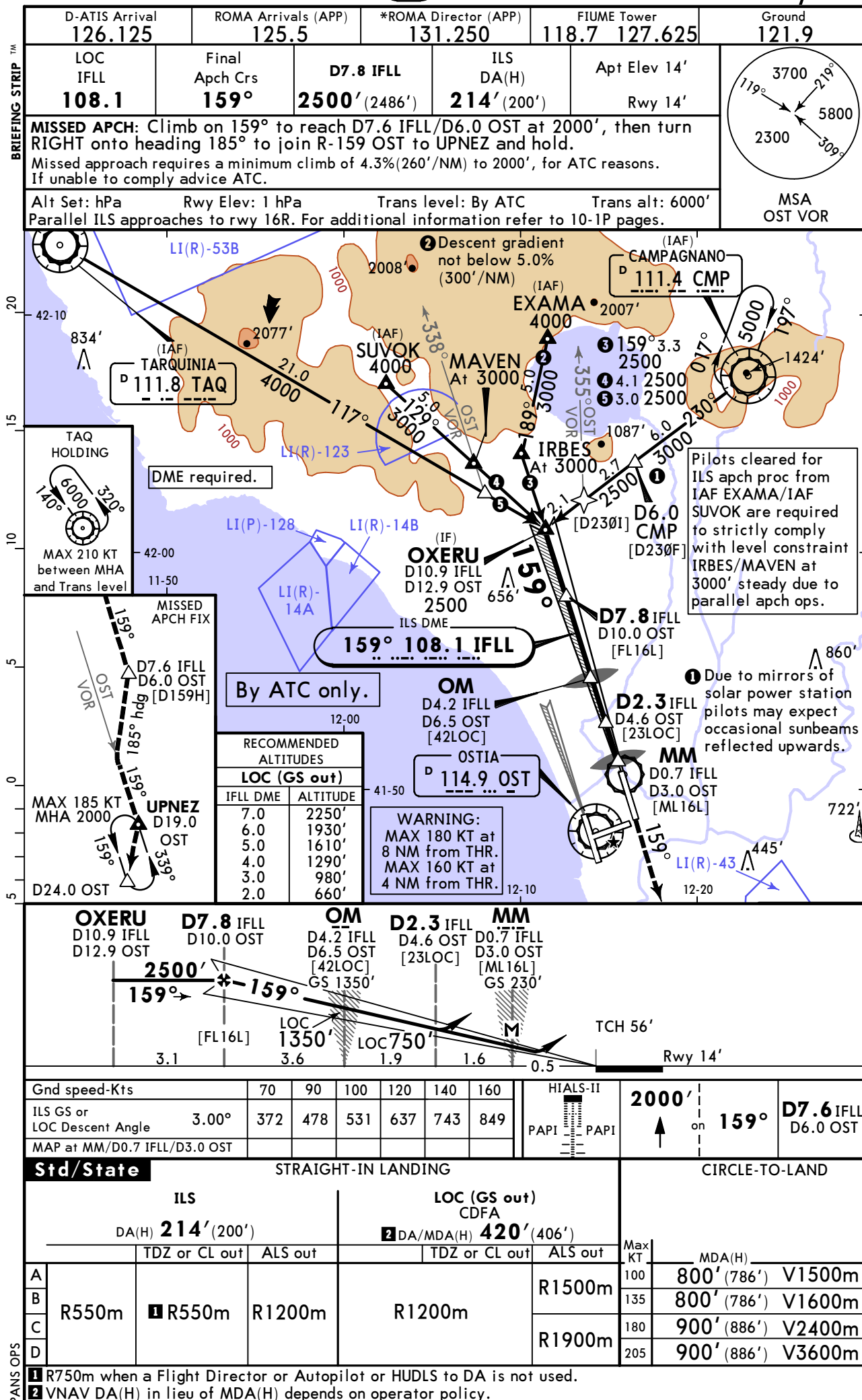


LIRF/FCO
FIUMICINO
JEPPESSEN
ROME, ITALY

2 AUG 24

(11-1)

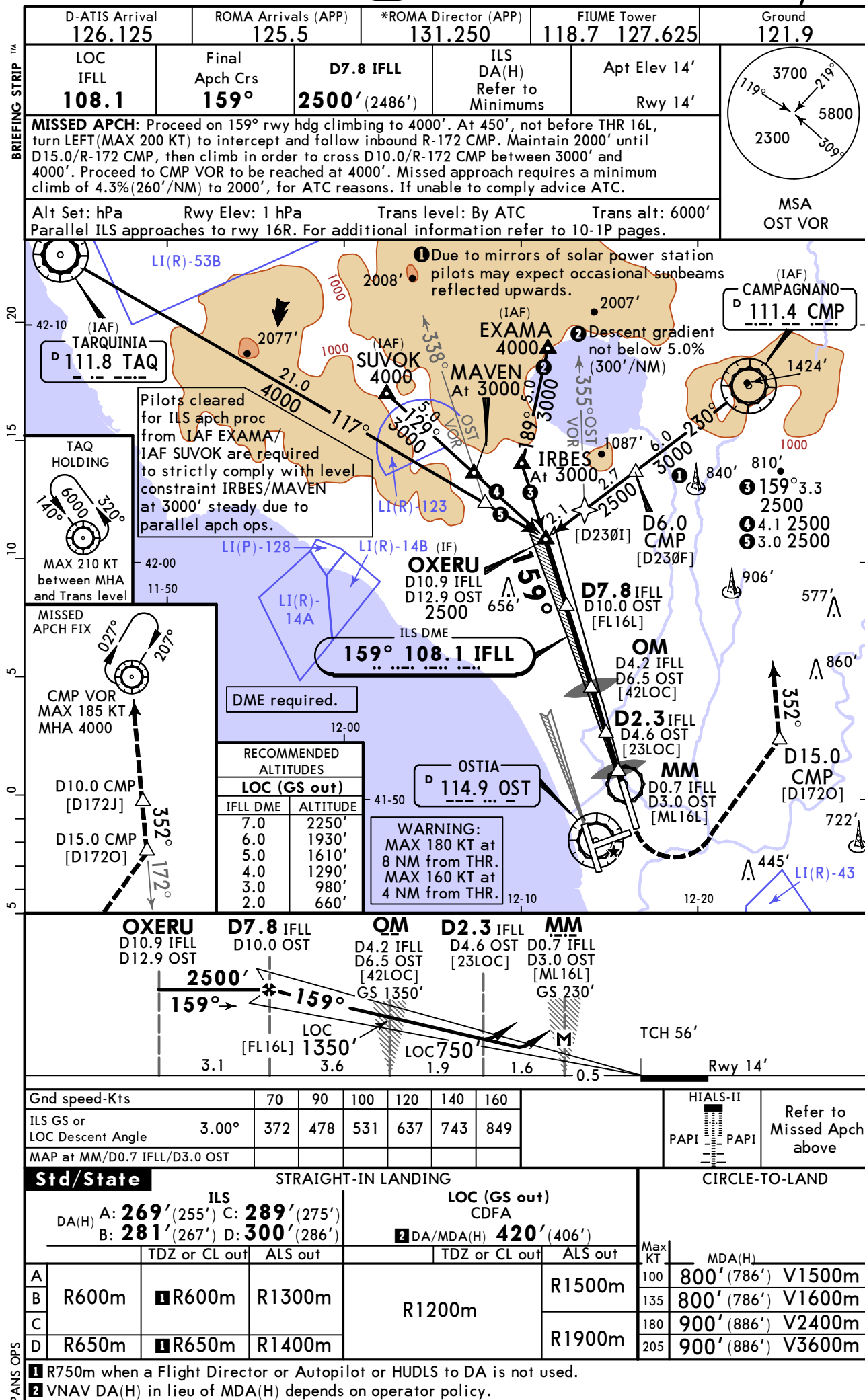
Eff 8 Aug

ILS X or LOC X Rwy 16L


LIRF/FCO
FIUMICINO

JEPPESEN
2 AUG 24 11-2 Eff 8 Aug

ROME, ITALY
ILS W or LOC W Rwy 16L



LIRF/FCO
FIUMICINO

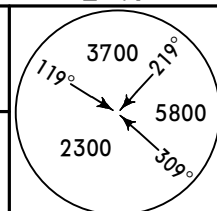
JEPPESSEN
2 AUG 24
Eff 8 Aug 11-2A

ROME, ITALY
CAT II/III ILS W Rwy 16L

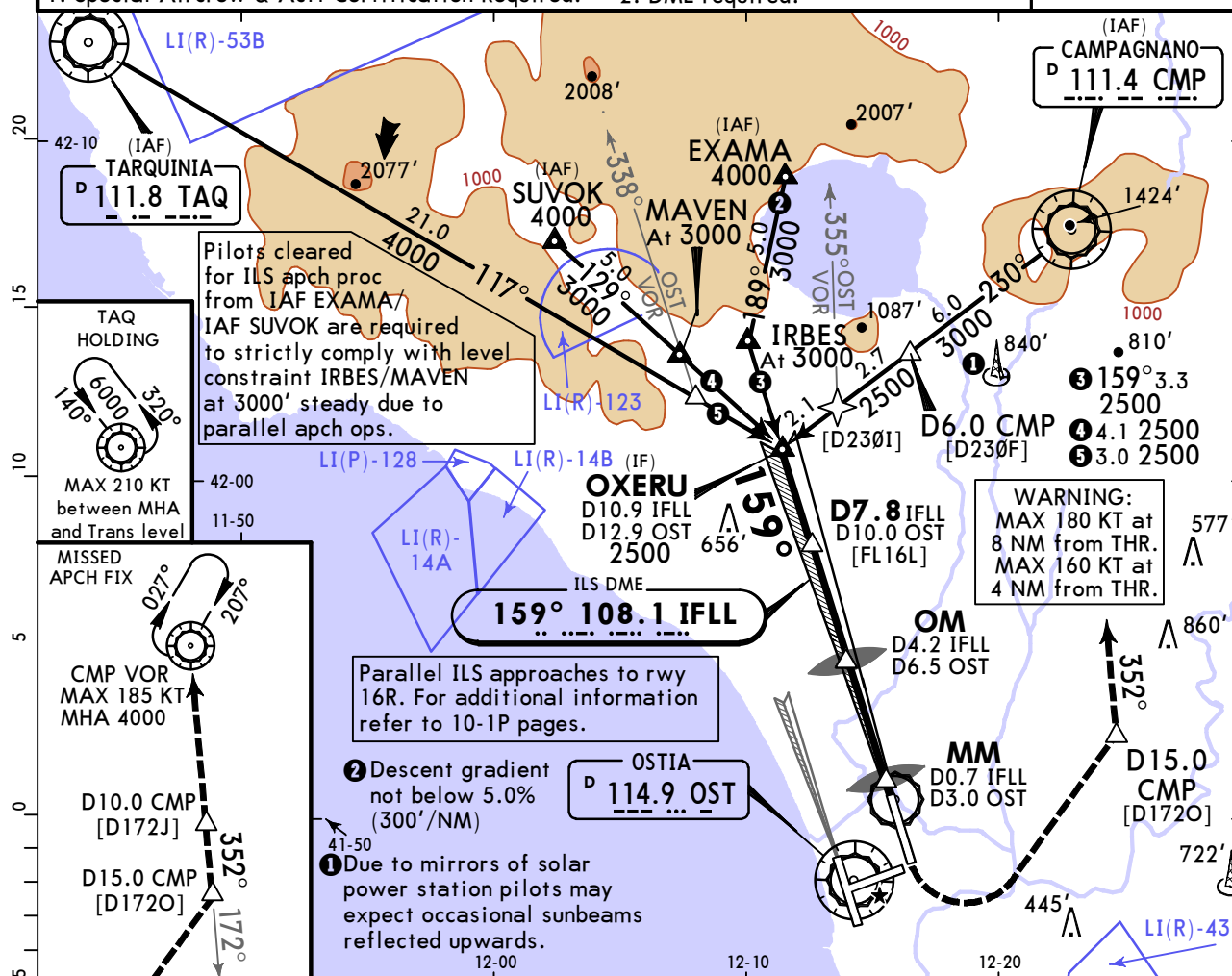
D-ATIS Arrival 126.125	ROMA Arrivals (APP) 125.5	*ROMA Director (APP) 131.250	FIUME Tower 118.7 127.625	Ground 121.9
LOC IFLL 108.1	Final Apch Crs 159°	D7.8 IFLL 2500' (2486')	CAT III & II ILS Refer to Minimums	Apt Elev 14' Rwy 14'
<p>MISSED APCH: Proceed on 159° rwy hdg climbing to 4000'. At 450', not before THR 16L, turn LEFT (MAX 200 KT) to intercept and follow inbound R-172 CMP. Maintain 2000' until D15.0/R-172 CMP, then climb in order to cross D10.0/R-172 CMP between 3000' and 4000'. Proceed to CMP VOR to be reached at 4000'. Missed approach requires a minimum climb of 4.3%(260'/NM) to 2000', for ATC reasons. If unable to comply advise ATC.</p>				
<p>Alt Set: hPa Rwy Elev: 1 hPa Trans level: By ATC Trans alt: 6000'</p> <p>1. Special Aircrew & Acft Certification Required. 2. DME required.</p>				

DATE/TIME START

MSA
OST VOR



MSA
OST VOR



OXERU
D10.9 IFLL
D12.9 OST

D7.8 IFLL
D10.0 OST
[FL16L]

OM
D4.2 IFLL
D6.5 OST
GS 1350'

MM
D0.7 IFLL
D3.0 OST
GS 230'

2500'

159°

159°

3.1

3.6

3.5

0.5

TCH 56'

Rwy 14'

Gnd speed-Kts	70	90	100	120	140	160
GS 3.00°	372	478	531	637	743	849

HIALS-II
PAPI ——— PAPI

Refer to Missed Apch above

Std/State

STRAIGHT-IN LANDING

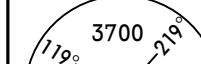
CAT III ILS		CAT II ILS					
A		B		C		D	
RA 150'		RA 159'		RA 163'		RA 176'	
DA(H)	170'(156')	DA(H)	180'(166')	DA(H)	185'(171')	DA(H)	200'(186')

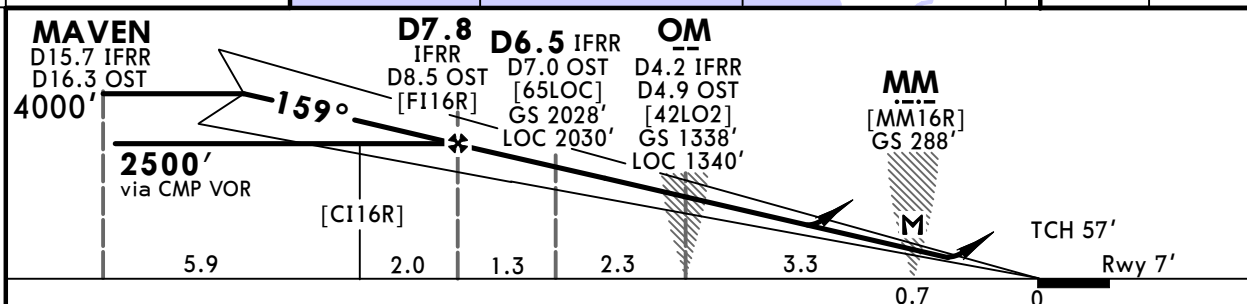
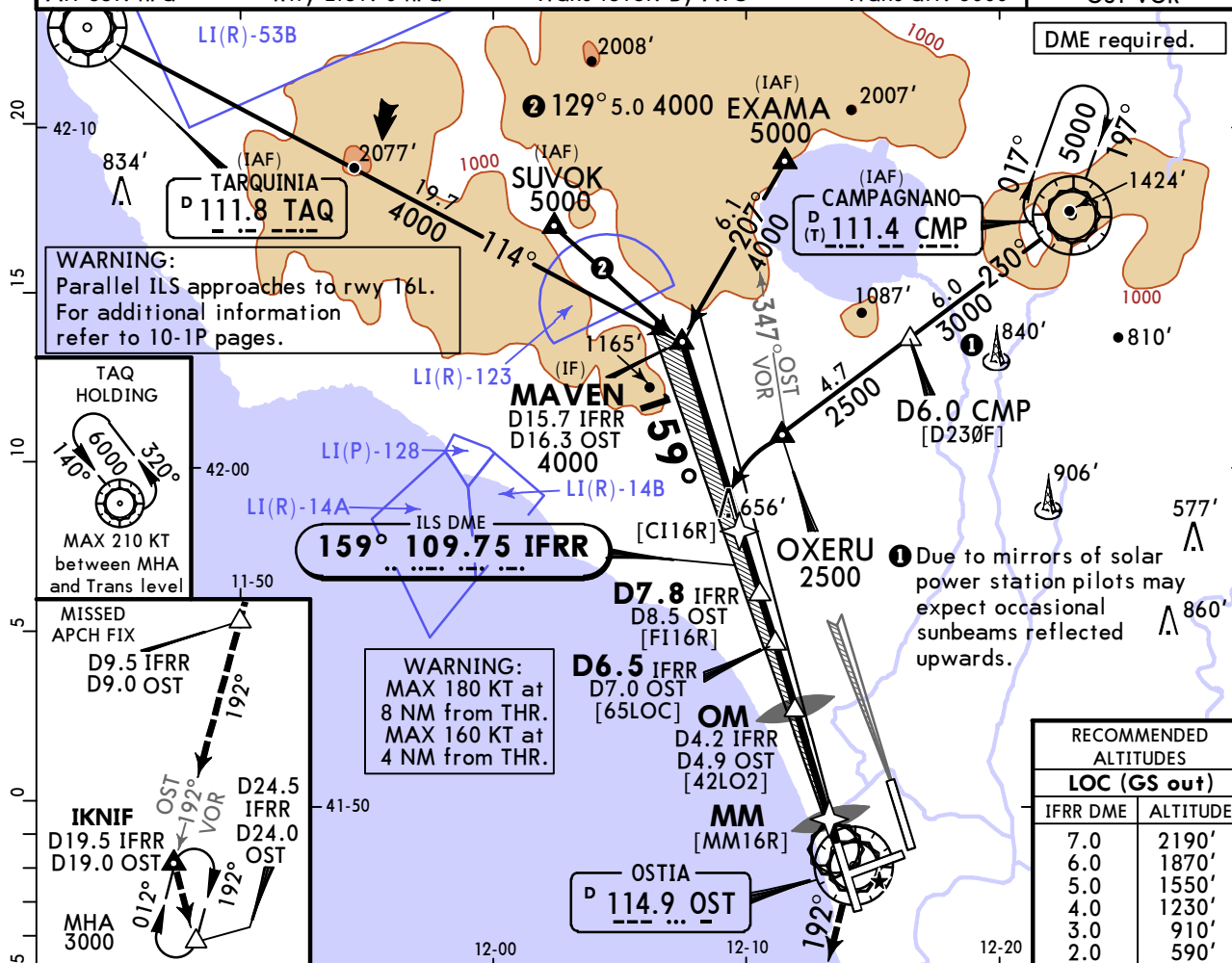
R75m


R450m

PANS OPS

ROME, ITALY
ILS Z or LOC Z Rwy 16R

D-ATIS Arrival 126.125	ROMA Arrivals (APP) 125.5	*ROMA Director (APP) 131.250	FIUME Tower 118.7	Ground 121.9
LOC IFRR 109.75	Final Apch Crs 159°	D7.8 IFRR 2500' (2493')	ILS DA(H) Refer to Minimums	Apt Elev 14' Rwy 7'
MISSED APCH: Climb on 159° to 400', then turn RIGHT onto R-192 OST climbing to 3000'. Cross 2000' within D9.5 IFRR (D9.0 OST). Continue to IKNIF and hold.				
Alt Set: hPa	Rwy Elev: 0 hPa	Trans level: By ATC	Trans alt: 6000'	 MSA OST VOR



Gnd speed-Kts	70	90	100	120	140	160		<p>Refer to Missed Apch above</p>
ILS GS or LOC Descent Angle 3.00°	372	478	531	637	743	849		
MAP at MM								

Std/State		STRAIGHT-IN LANDING				CIRCLE-TO-LAND	
		ILS		LOC (GS out)			
		C: 210' (203')		CDFA			
DA(H) AB: 207' (200') D: 220' (213')				2 DA/MDA(H) 400' (393')			
		TDZ or CL out	ALS out			Max KT	MDA(H)
A	R550m	1 R550m	R1200m	R1100m		R1500m	100 800' (786') V1500m
B							135 800' (786') V1600m
C						R1800m	180 900' (886') V2400m
D							205 900' (886') V3600m

1	R750m when a Flight Director or Autopilot or HUDLS to DA is not used.
2	VNAV DA(H) in lieu of MDA(H) depends on operator policy.

CHANGES: Missed apch, warning.

© JEPPESEN, 2001, 2024. ALL RIGHTS RESERVED.

LIRF/FCO
FIUMICINO

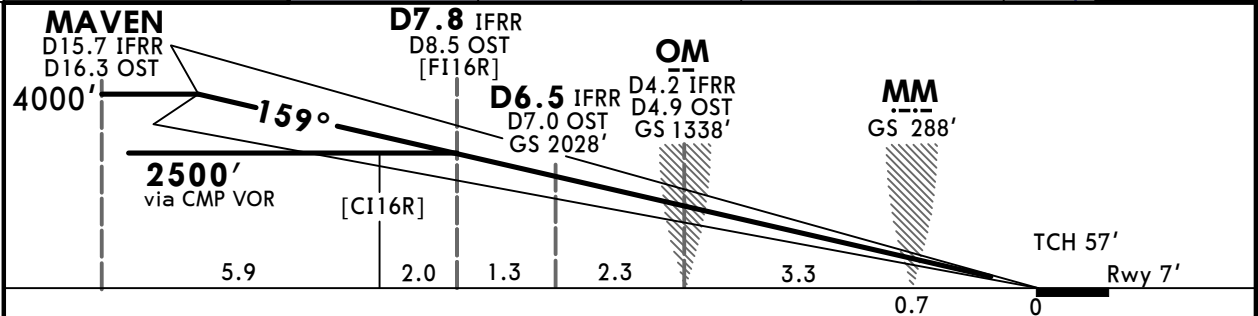
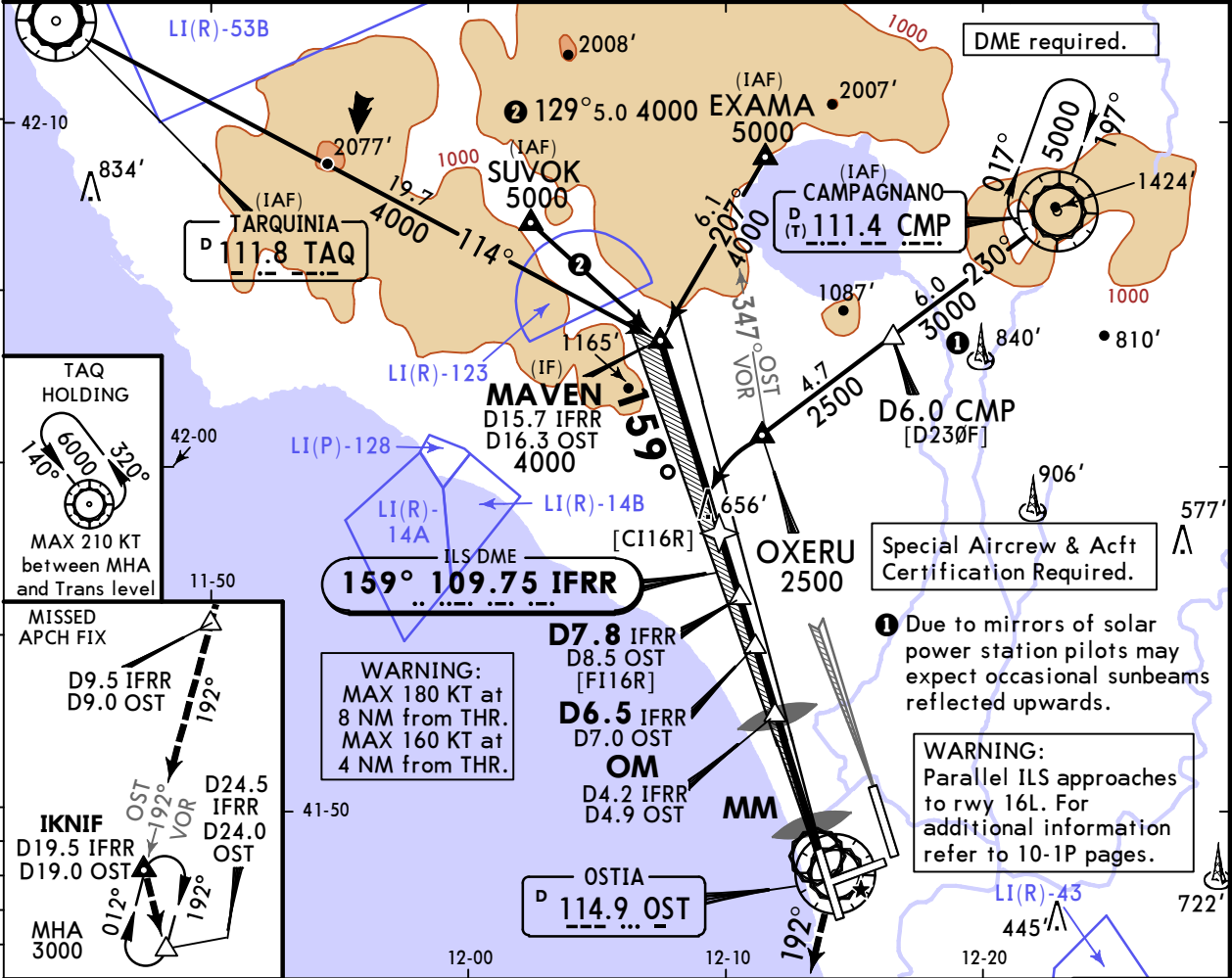
JEPPESSEN
2 AUG 24
Eff 8 Aug 11-3A

ROME, ITALY
CAT II/III ILS Z Rwy 16R

D-ATIS Arrival 126.125	ROMA Arrivals (APP) 125.5	*ROMA Director (APP) 131.250	FIUME Tower 118.7	Ground 121.9
LOC IFRR 109.75	Final Aptch Crs 159°	D7.8 IFRR 2500' (2493')	CAT III & II ILS Refer to Minimums	Apt Elev 14' Rwy 7'

MISSED APCH: Climb on 159° to 400', then turn RIGHT onto R-192 OST climbing to 3000'. Cross 2000' within D9.5 IFRR (D9.0 OST). Continue to IKNIF and hold.

Alt Set: hPa Rwy Elev: 0 hPa Trans level: By ATC Trans alt: 6000' MSA OST VOR



Gnd speed-Kts	70	90	100	120	140	160	<div><div>HIALS-II</div><div><div>PAPI</div><div>PAPI</div></div></div>	Refer to Missed Apch above
GS 3.00°	372	478	531	637	743	849		

Std/State		STRAIGHT-IN LANDING		
CAT III ILS		AB RA 102' DA(H) 107' (100')	C RA 107' DA(H) 112' (105')	D RA 124' DA(H) 126' (119')
R75m		R300m		

1 CAT D requires autoland or HUDLS, otherwise: R350m.

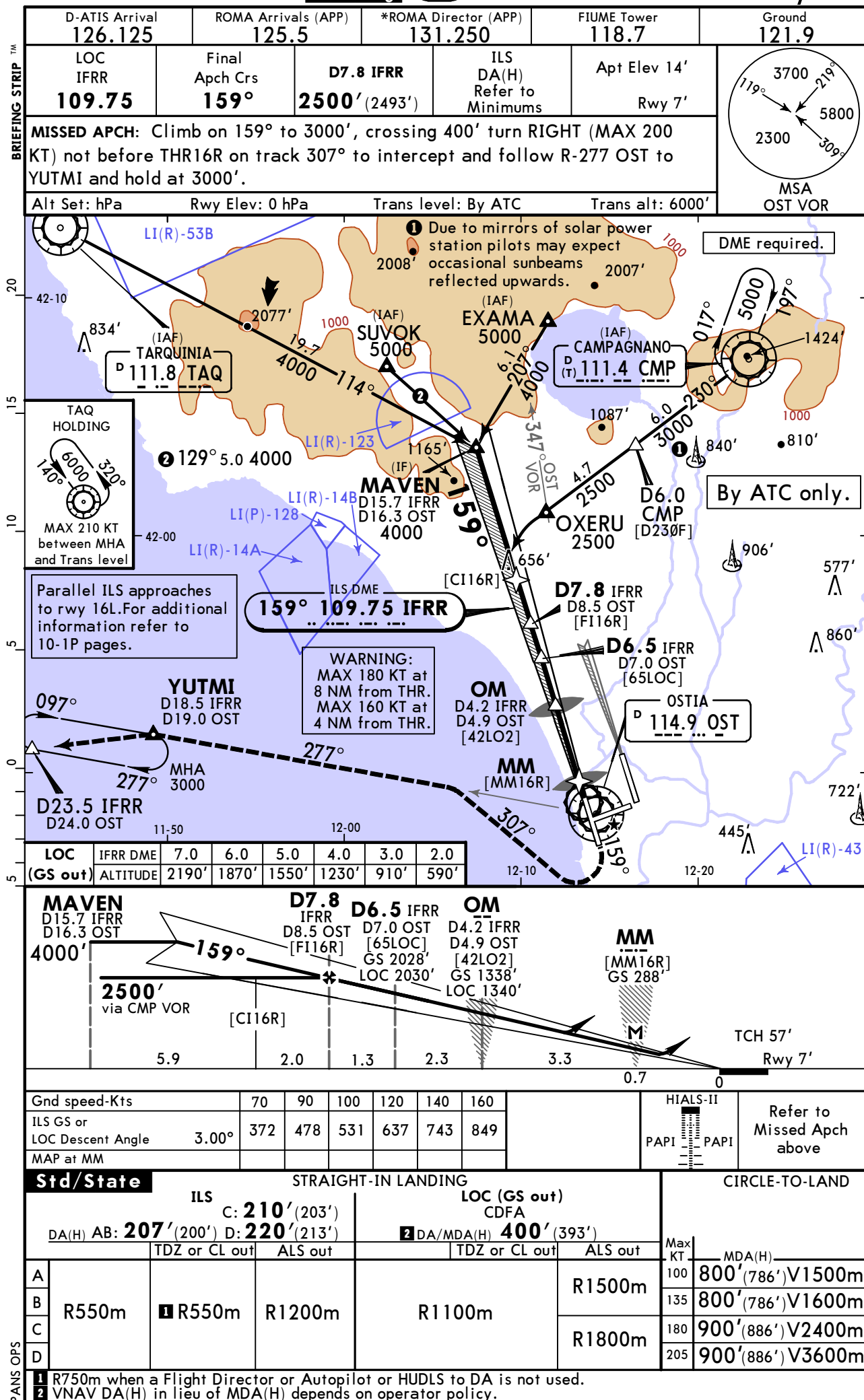
CHANGES: Missed apch, warning.

© JEPPESSEN, 2001, 2024. ALL RIGHTS RESERVED.

LIRF/FCO
FIUMICINO

JEPPESSEN
2 AUG 24
Eff 8 Aug **(11-4)**

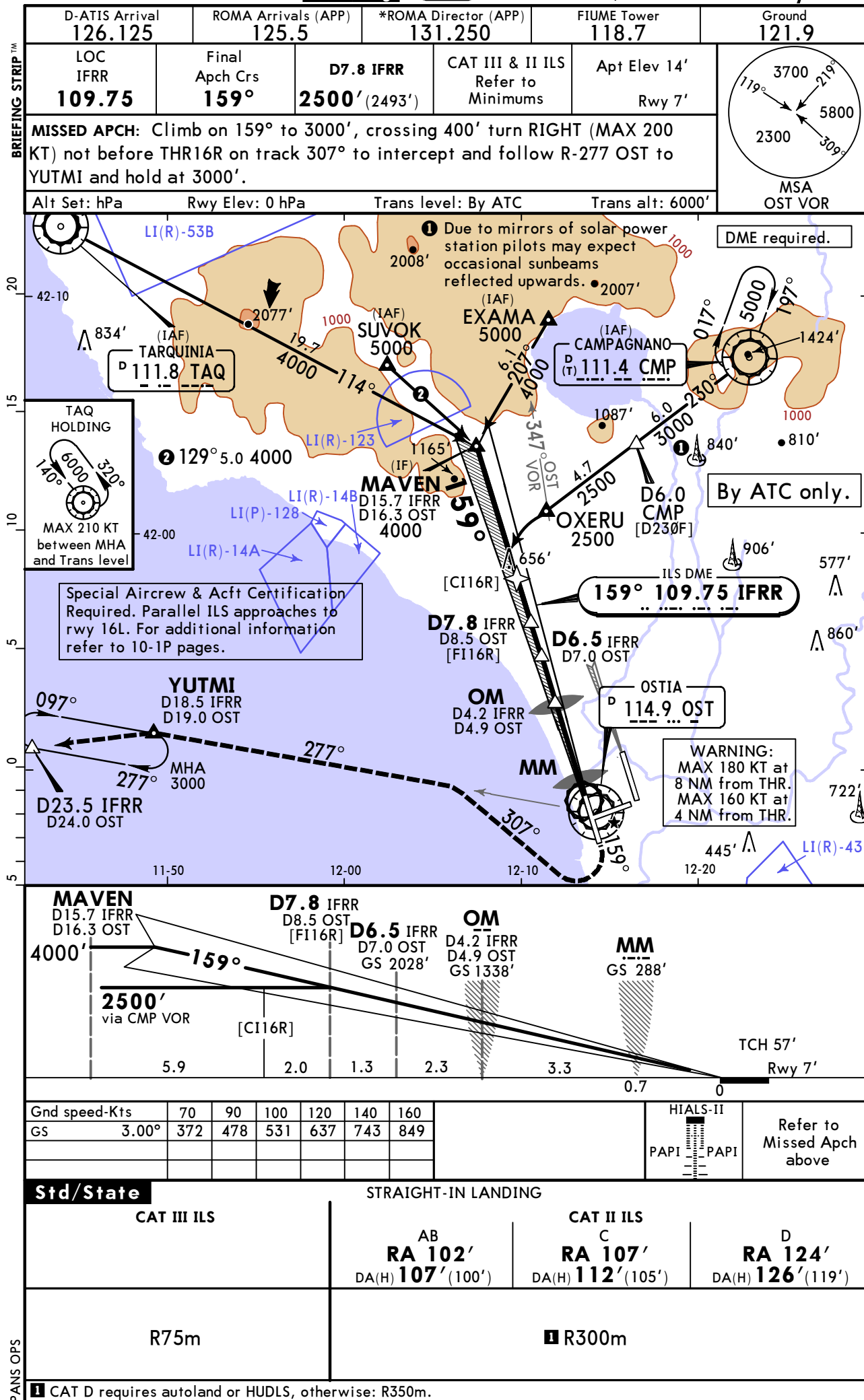
ROME, ITALY
ILS Y or LOC Y Rwy 16R



LIRF/FCO
FIUMICINO

JEPPESSEN
2 AUG 24
Eff 8 Aug 11-4A

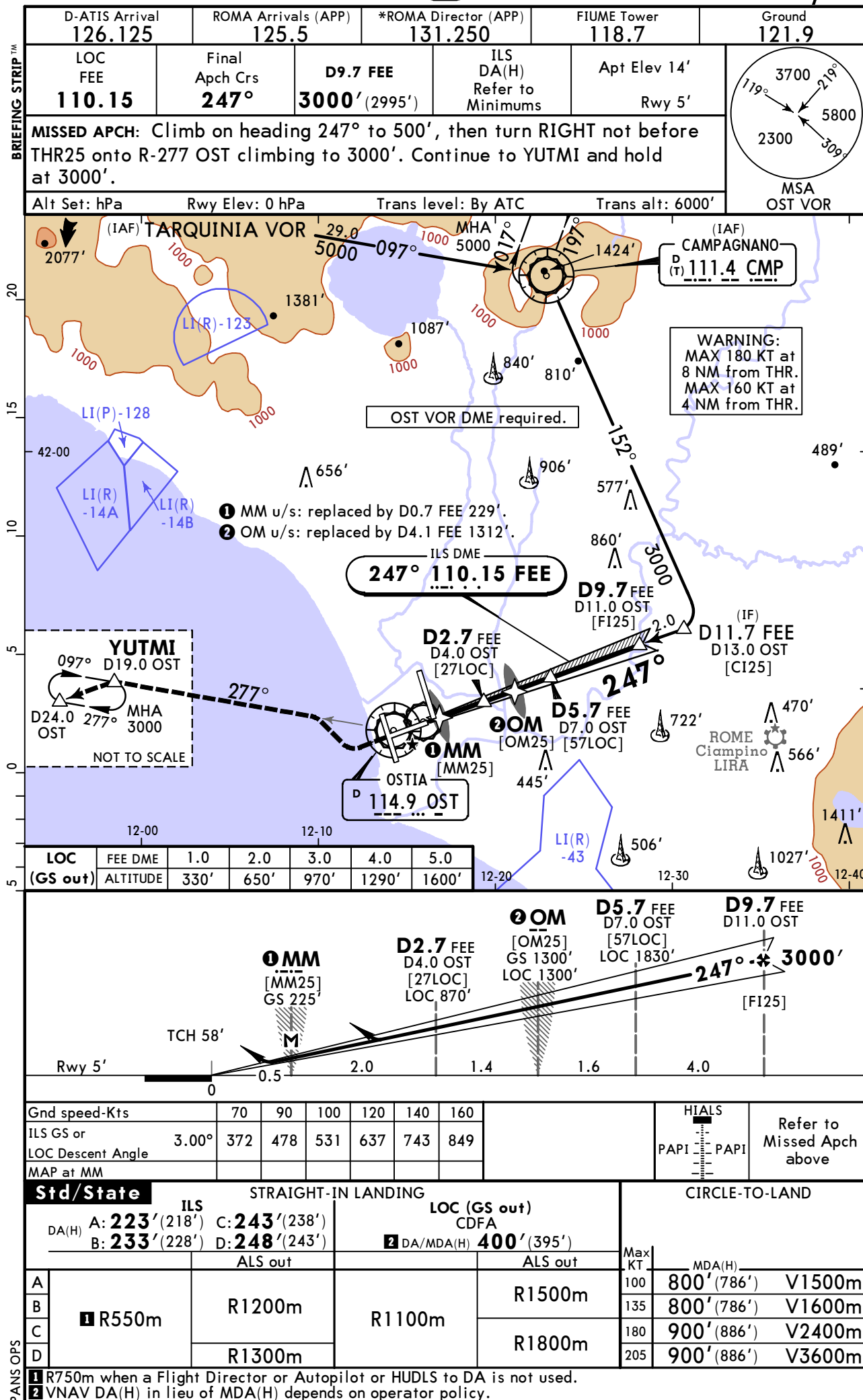
ROME, ITALY
CAT II/III ILS Y Rwy 16R



LIRF/FCO
FIUMICINO

JEPPESSEN
2 AUG 24 **(11-5)** **Eff 8 Aug**

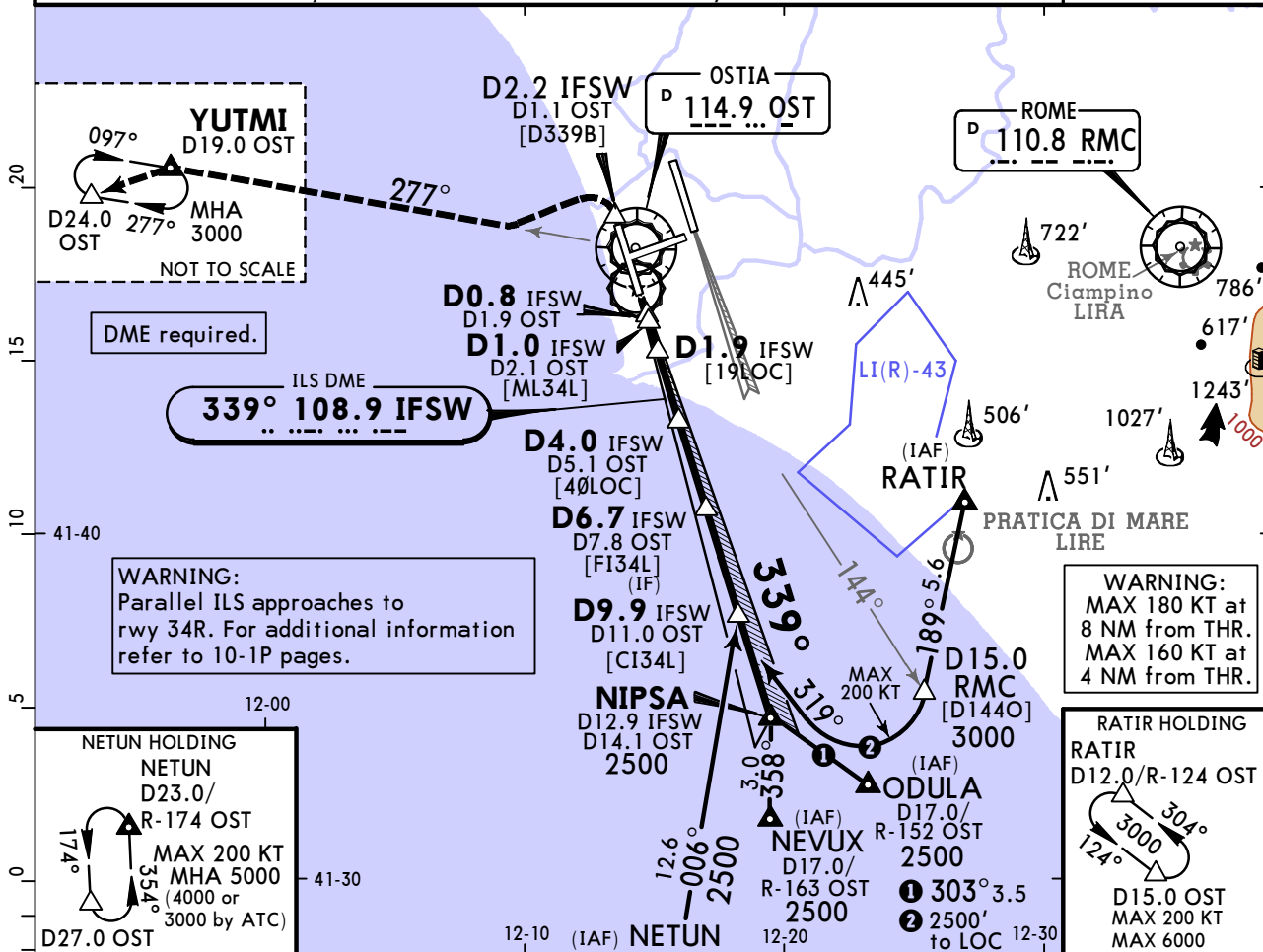
ROME, ITALY
ILS or LOC Rwy 25



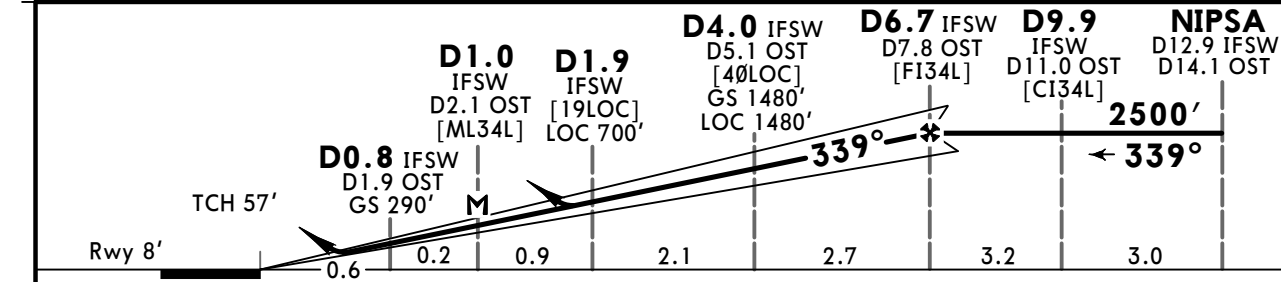
LIRF/FCO
FIUMICINO
JEPPesen
2 AUG 24 **(11-6)** Eff 8 Aug

ROME, ITALY
ILS or LOC Rwy 34L

D-ATIS Arrival 126.125	ROMA Arrivals (APP) 125.5	*ROMA Director (APP) 131.250	FIUME Tower 118.7	Ground 121.9
LOC IFSW 108.9	Final Apth Crs 339°	D6.7 IFSW 2500' (2492')	ILS DA(H) Refer to Minimums	Apt Elev 14' Rwy 8'
MISSED APCH: Climb to 3000' on track 339°. At D2.2 IFSW (D1.1 OST) turn LEFT (MAX 200 KT) to join R-277 OST direct to YUTMI and hold at 3000'.				
Alt Set: hPa	Rwy Elev: 0 hPa	Trans level: By ATC	Trans alt: 6000'	MSA OST VOR



LOC (GS out)	IFSW DME	1.0	2.0	3.0	4.0	5.0	6.0
	ALTITUDE	380'	750'	1120'	1490'	1860'	2240'



Gnd speed-Kts	70	90	100	120	140	160	HIALS	Refer to Missed Apch above
ILS GS or LOC Descent Angle	3.50°	434	557	619	743	867	PAPI	
MAP at D1.0 IFSW/D2.1 OST								

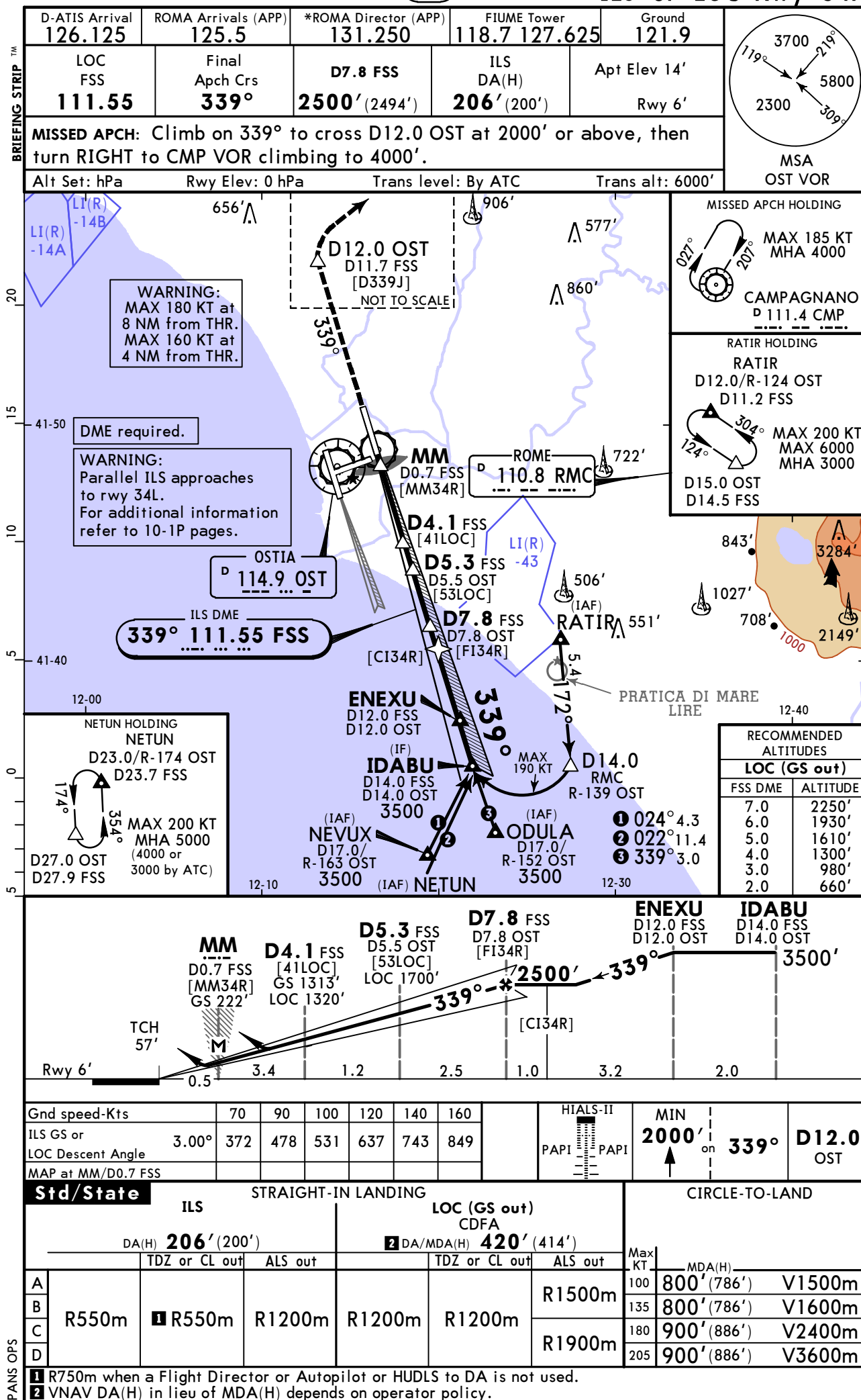
Std/State		STRAIGHT-IN LANDING		CIRCLE-TO-LAND	
ILS		LOC (GS out)		CIRCLE-TO-LAND	
DA(H) C: 214' (206')		CDFA DA/MDA(H) 400' (386')		Max KT	
AB: 208' (200')		ALS out		MDA(H)	
A		R750m		800' (786') V1500m	
B		R1200m		800' (786') V1600m	
C		R1400m		900' (886') V2400m	
D		R1800m		900' (886') V3600m	

VNAV DA(H) in lieu of MDA(H) depends on operator policy.

CHANGES: Missed apch, warning, new AOM format.

© JEPPesen, 2005, 2024. ALL RIGHTS RESERVED.

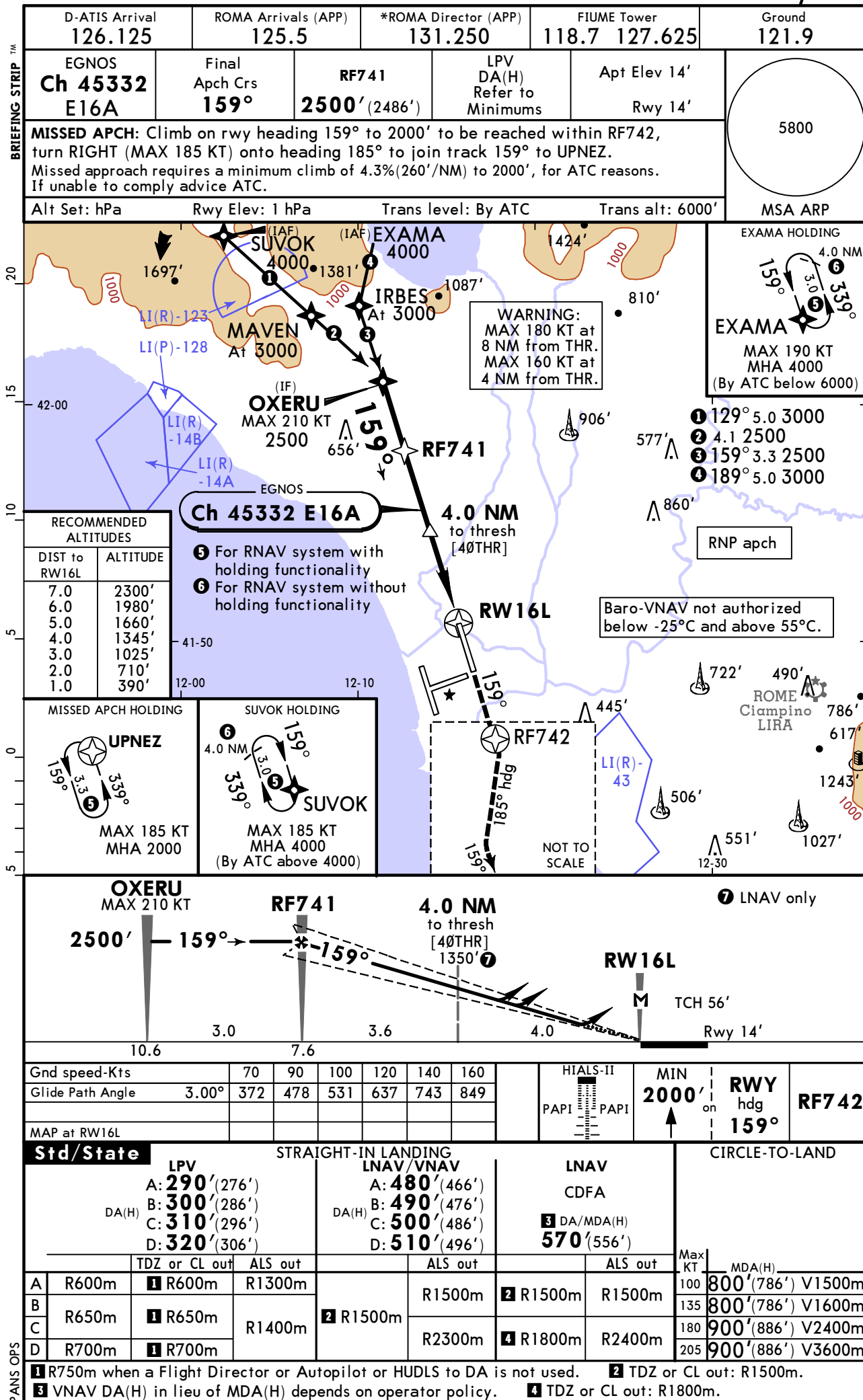
LIRF/FCO
FIUMICINO
JEPPesen

21 FEB 25 **(11-7)**
ROME, ITALY
ILS or LOC Rwy 34R


LIRF/FCO
FIUMICINO

JEPPESEN
30 AUG 24 **(12-2)** Eff 5 Sep

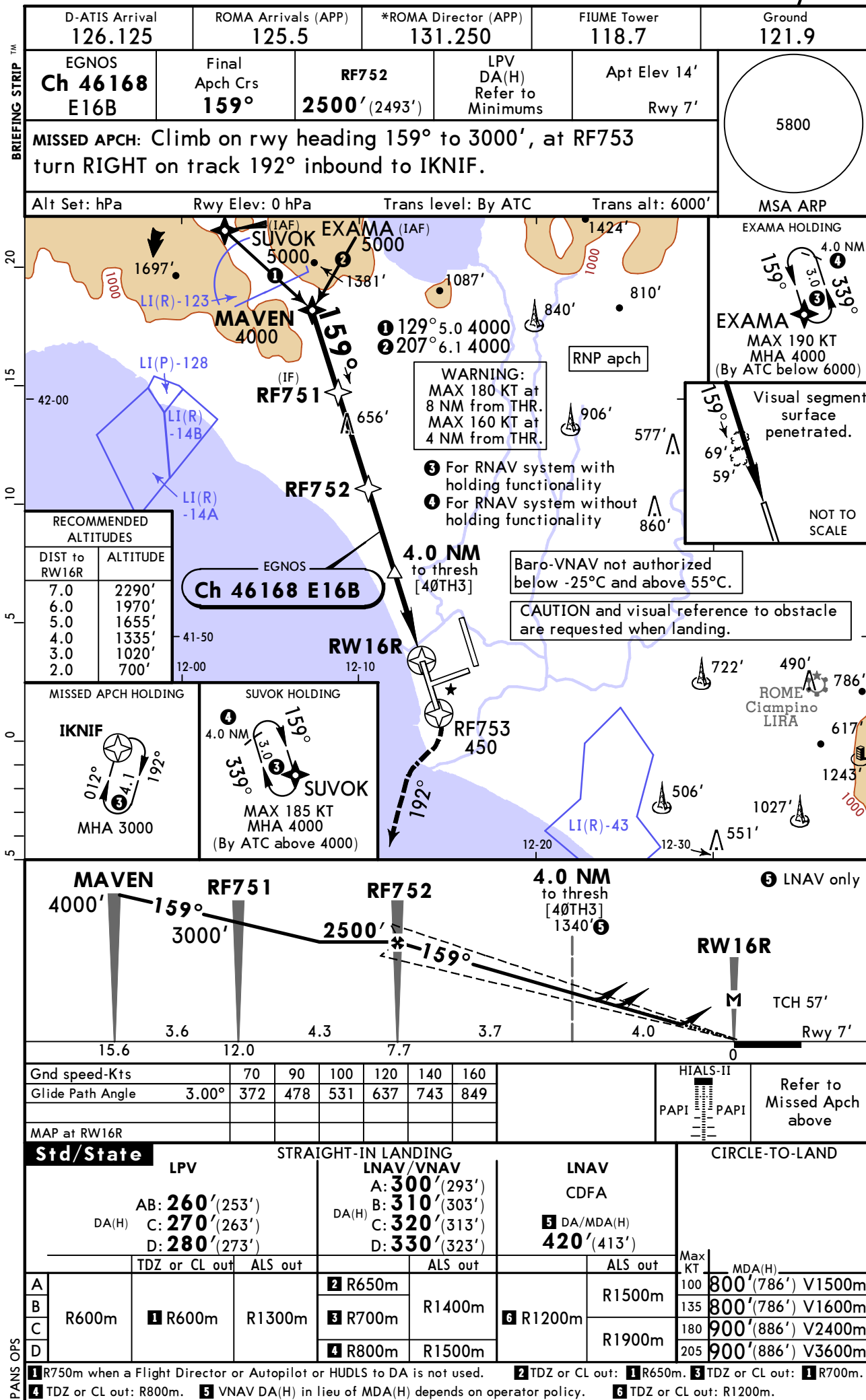
ROME, ITALY
RNP Rwy 16L



LIRF/FCO
FIUMICINO

JEPPESEN
2 AUG 24 **(12-3)** Eff 8 Aug

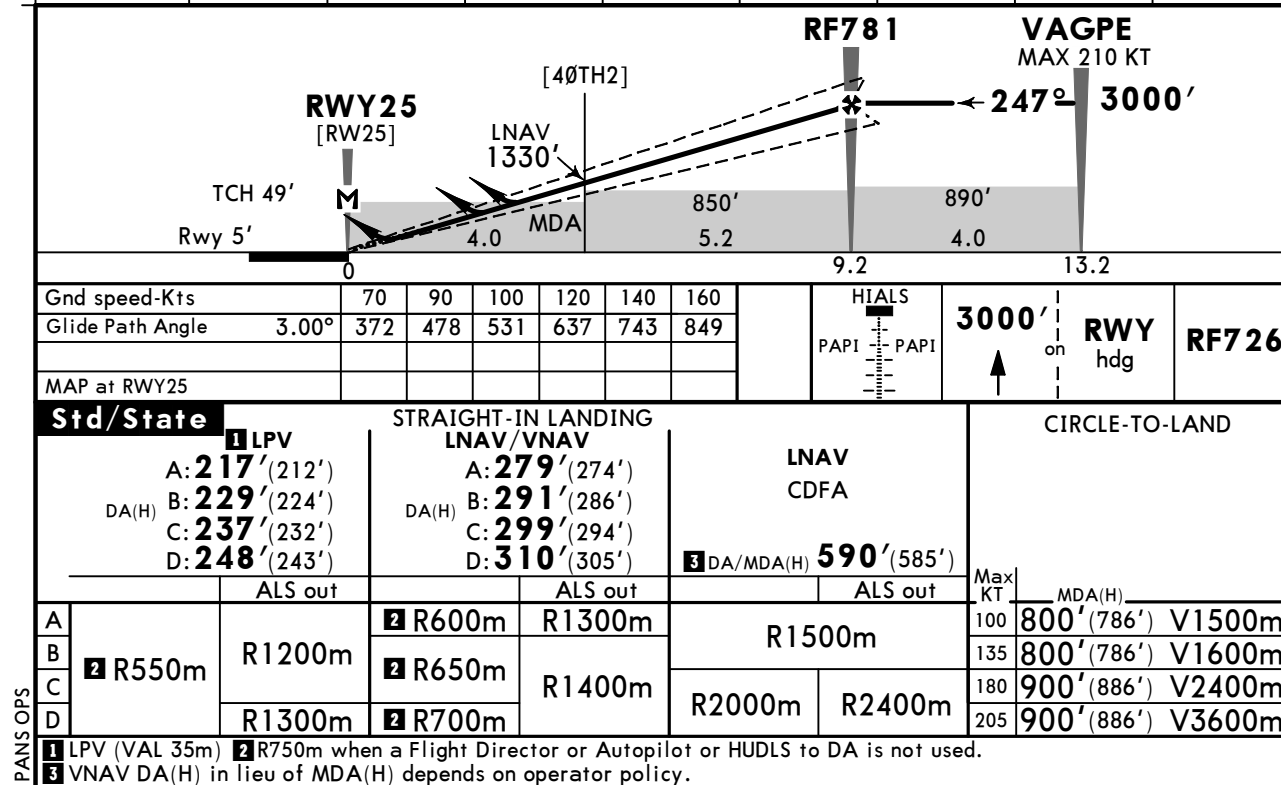
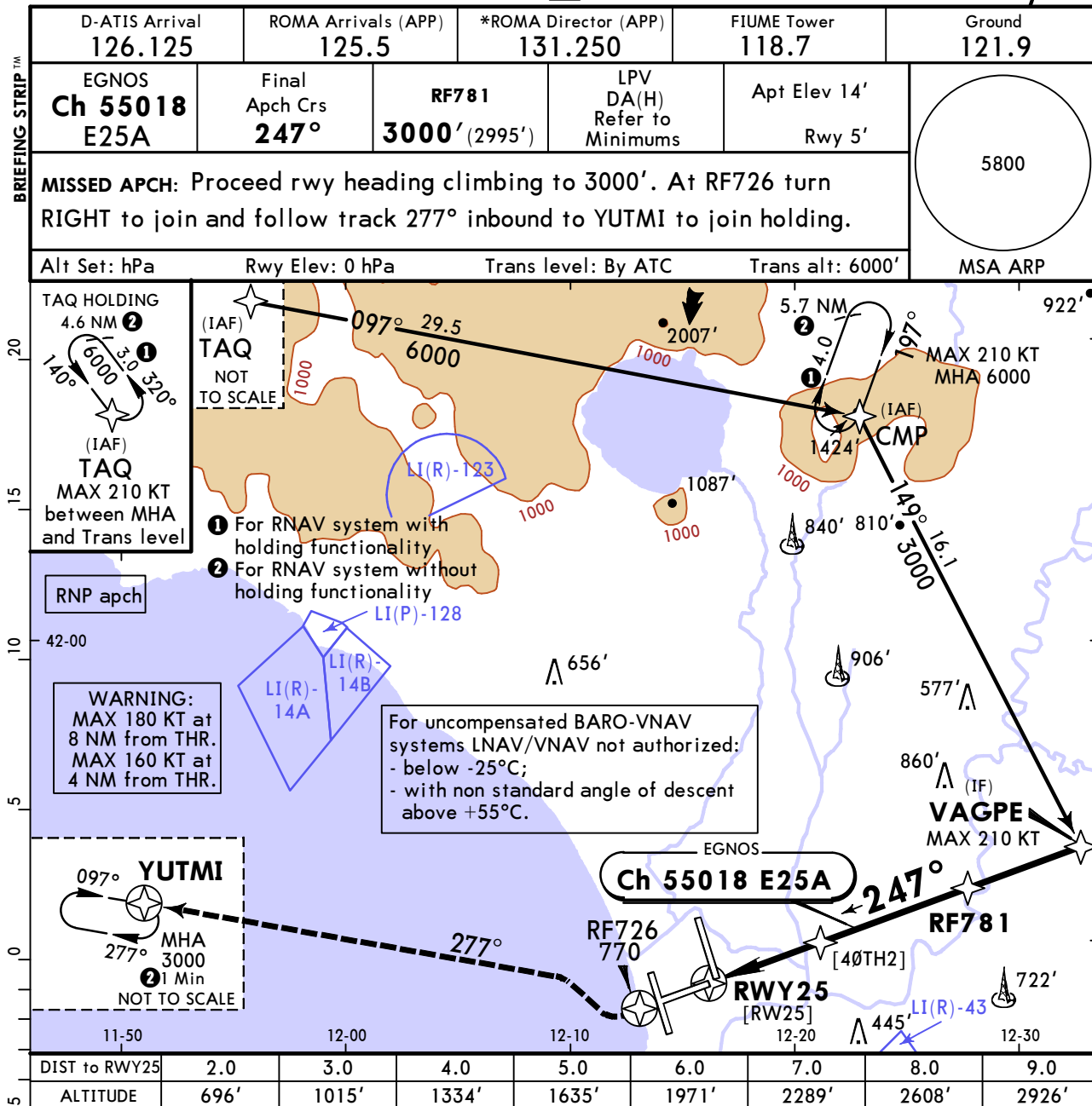
ROME, ITALY
RNP Rwy 16R



LIRF/FCO
FIUMICINO

JEPPESEN
2 AUG 24 **(12-4)** Eff 8 Aug

ROME, ITALY
RNP Rwy 25



CHANGES: Missed apch, warning, SMA, new AOM format.

© JEPPESEN, 2019, 2024. ALL RIGHTS RESERVED.

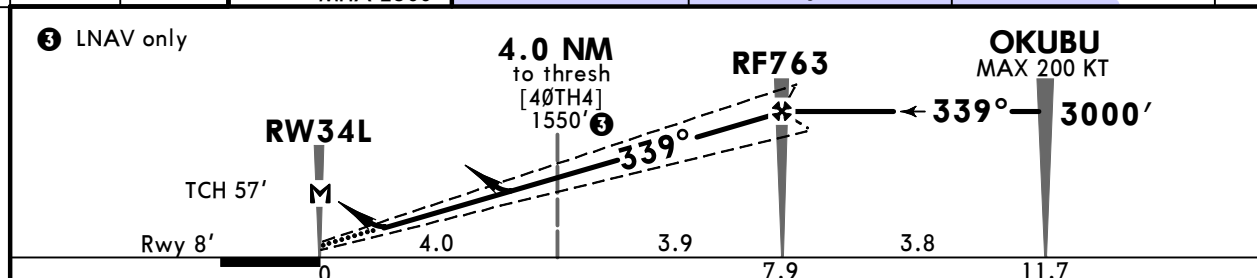
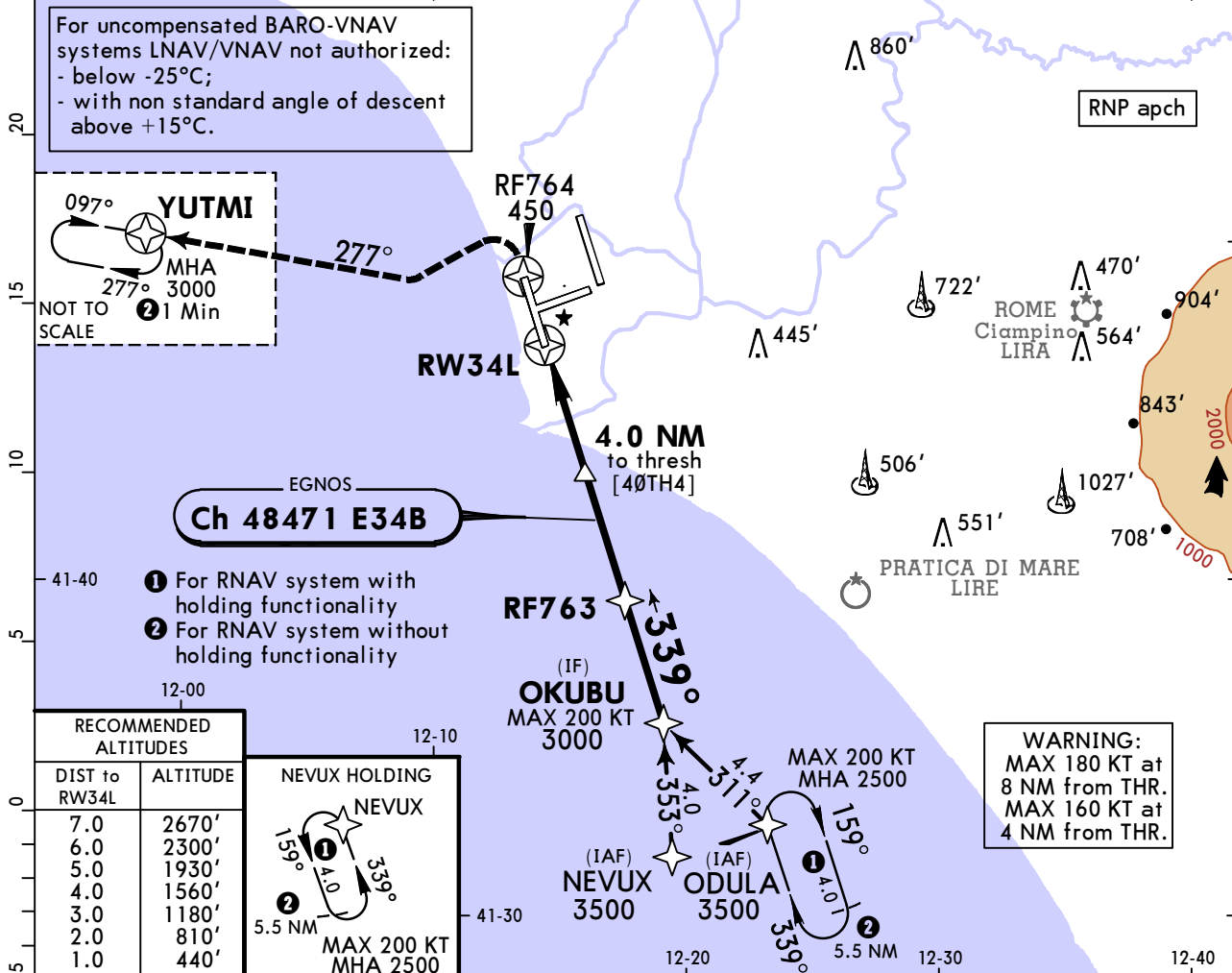
LIRF/FCO
FIUMICINO

JEPPESEN
2 AUG 24 (12-5) Eff 8 Aug

ROME, ITALY
RNP Rwy 34L

BRIEFING STRIP™

D-ATIS Arrival 126.125	ROMA Arrivals (APP) 125.5	*ROMA Director (APP) 131.250	FIUME Tower 118.7	Ground 121.9	<div>5800</div> <div>MSA ARP</div>
EGNOS Ch 48471 E34B	Final Apch Crs 339°	RF763 3000' (2992')	LPV DA(H) Refer to Minimums	Apt Elev 14' Rwy 8'	
MISSED APCH: Climb on 339° to cross RF764 at or above 450', then turn LEFT (MAX 210 KT) on track 277° inbound to YUTMI and join holding.					
Alt Set: hPa Rwy Elev: 0 hPa Trans level: By ATC Trans alt: 6000'					



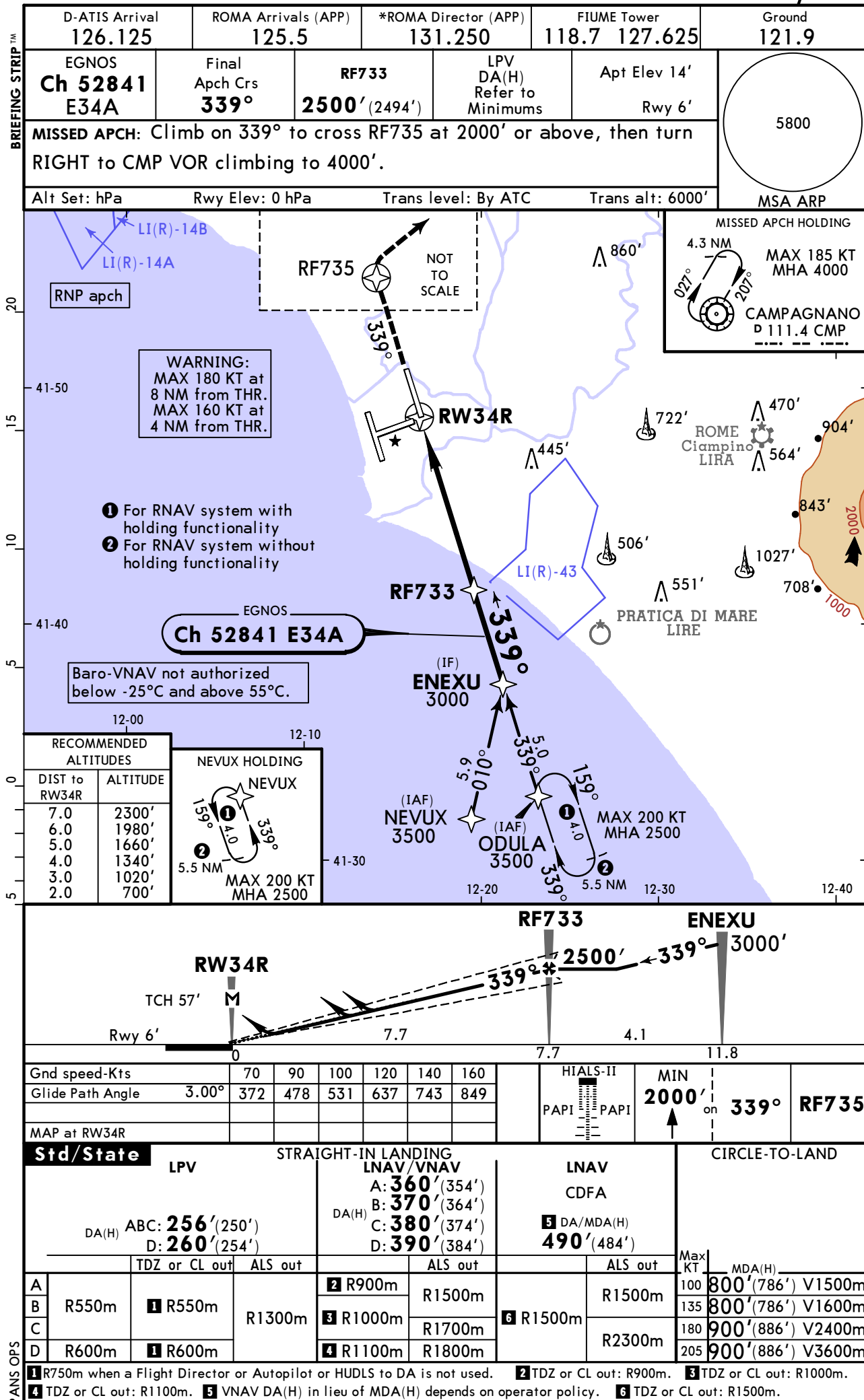
Gnd speed-Kts	70	90	100	120	140	160	HIALS PAPI PAPI	Refer to Missed Apch above
Glide Path Angle	3.50°	434	557	619	743	867		
MAP at RW34L								

Std/State		STRAIGHT-IN LANDING		CIRCLE-TO-LAND	
LPV		LNAV/VNAV		LNAV CDFA	
A: 290' (282')		A: 339' (331')		DA/MDA(H) 410' (402')	
B: 300' (292')		B: 351' (343')			
C: 310' (302')		C: 359' (351')			
D: 320' (312')		D: 370' (362')			
ALS out		ALS out		ALS out	
A	R900m	R1100m	R1500m	R1500m	Max 100 KT 800' (786') V1500m
B		R1200m			135 800' (786') V1600m
C	R1000m	R1400m	R1600m	R1900m	180 900' (886') V2400m
D		R1300m	R1700m		205 900' (886') V3600m

LIRF/FCO
FIUMICINO

JEPPESSEN
2 AUG 24 12-6 Eff 8 Aug

ROME, ITALY
RNP Rwy 34R



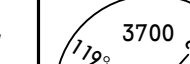
ROME, ITALY
VOR Rwy 07

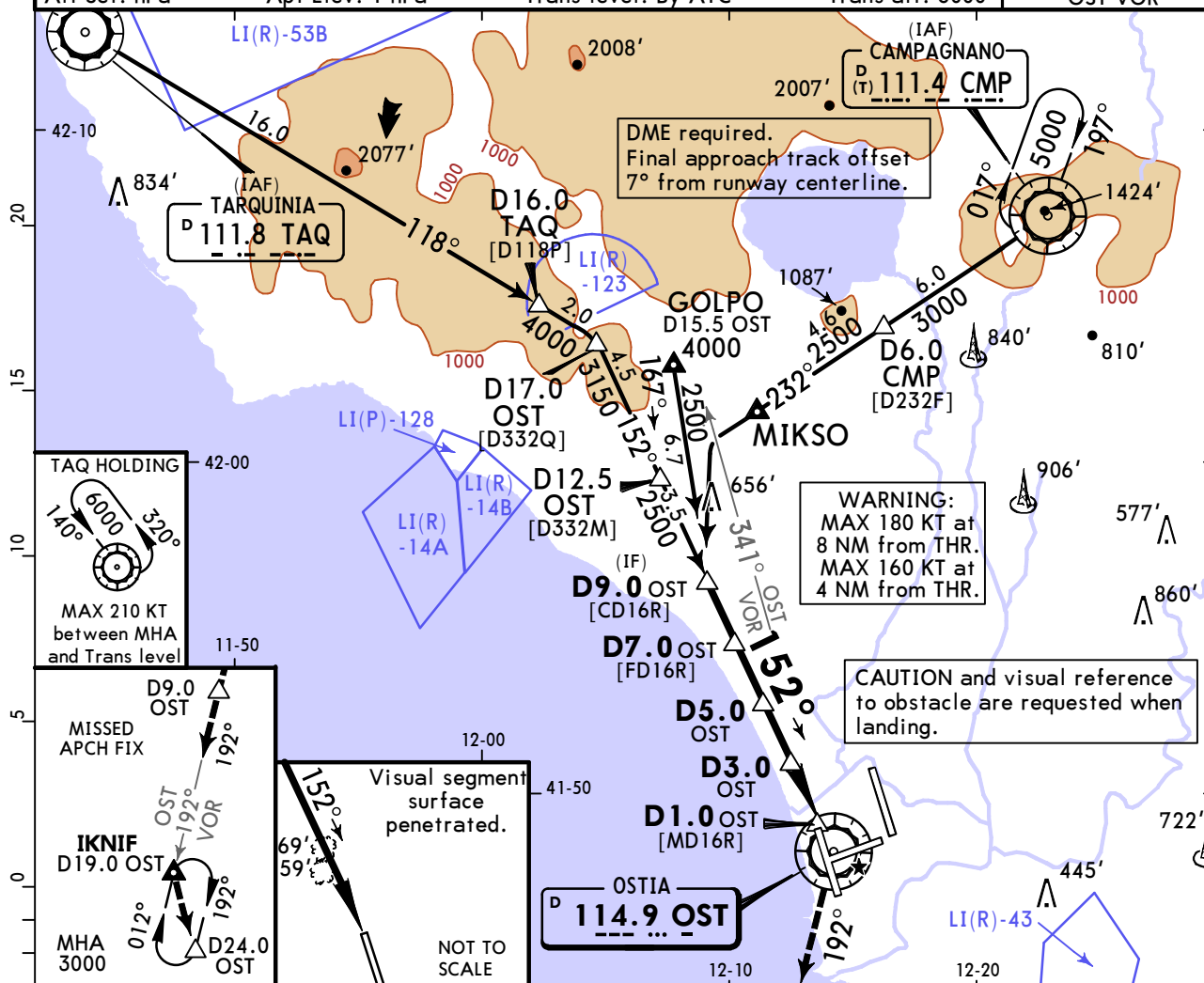
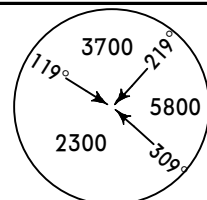
© JEPPESEN, 2015, 2024. ALL RIGHTS RESERVED.

LIRF/FCO
FIUMICINO

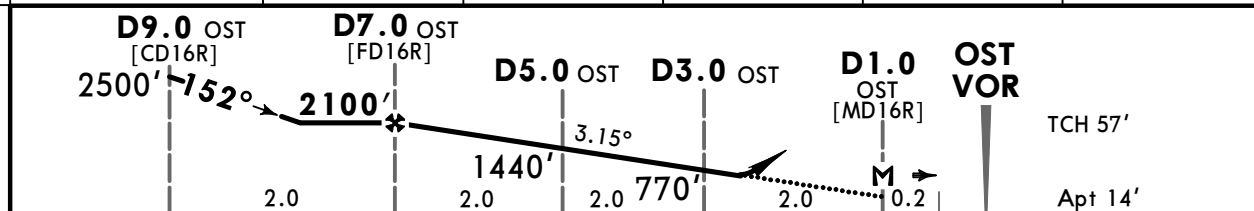
JEPPESEN
2 AUG 24 (13-2) Eff 8 Aug

ROME, ITALY
VOR Rwy 16R

D-ATIS Arrival 126.125	ROMA Arrivals (APP) 125.5	*ROMA Director (APP) 131.250	FIUME Tower 118.7	Ground 121.9
VOR OST 114.9	Final Apch Crs 152°	D7.0 OST 2100' (2086')	DA/MDA(H) 400' (386')	Apt Elev 14'
MISSSED APCH: Turn RIGHT on R-192 OST climbing to 3000'. Cross 2000' within D9.0 OST. Continue to IKNIF and hold.				
Alt Set: hPa	Apt Elev: 1 hPa	Trans level: Bv ATC	Trans alt: 6000'	 MSA OST VOR



OST DME	6.0	5.0	4.0	3.0	2.0
ALTITUDE	1770'	1440'	1100'	770'	430'



Gnd speed-Kts	70	90	100	120	140	160	
Descent Angle 3.15°	390	502	557	669	780	892	
MAP at D1.0 OST							

Std/State		STRAIGHT-IN LANDING		CIRCLE-TO-LAND	
		CDFA			
		1 DA/MDA(H) 400' (386')			
		TDZ or CL out	ALS out	Max KT	MDA(H)
A	R1100m	R1100m	R1500m	100	800' (786') V1500m
B				135	800' (786') V1600m
C			R1800m	180	900' (886') V2400m
D				205	900' (886') V3600m

1 VNAV DA(H) in lieu of MDA(H) depends on operator policy.

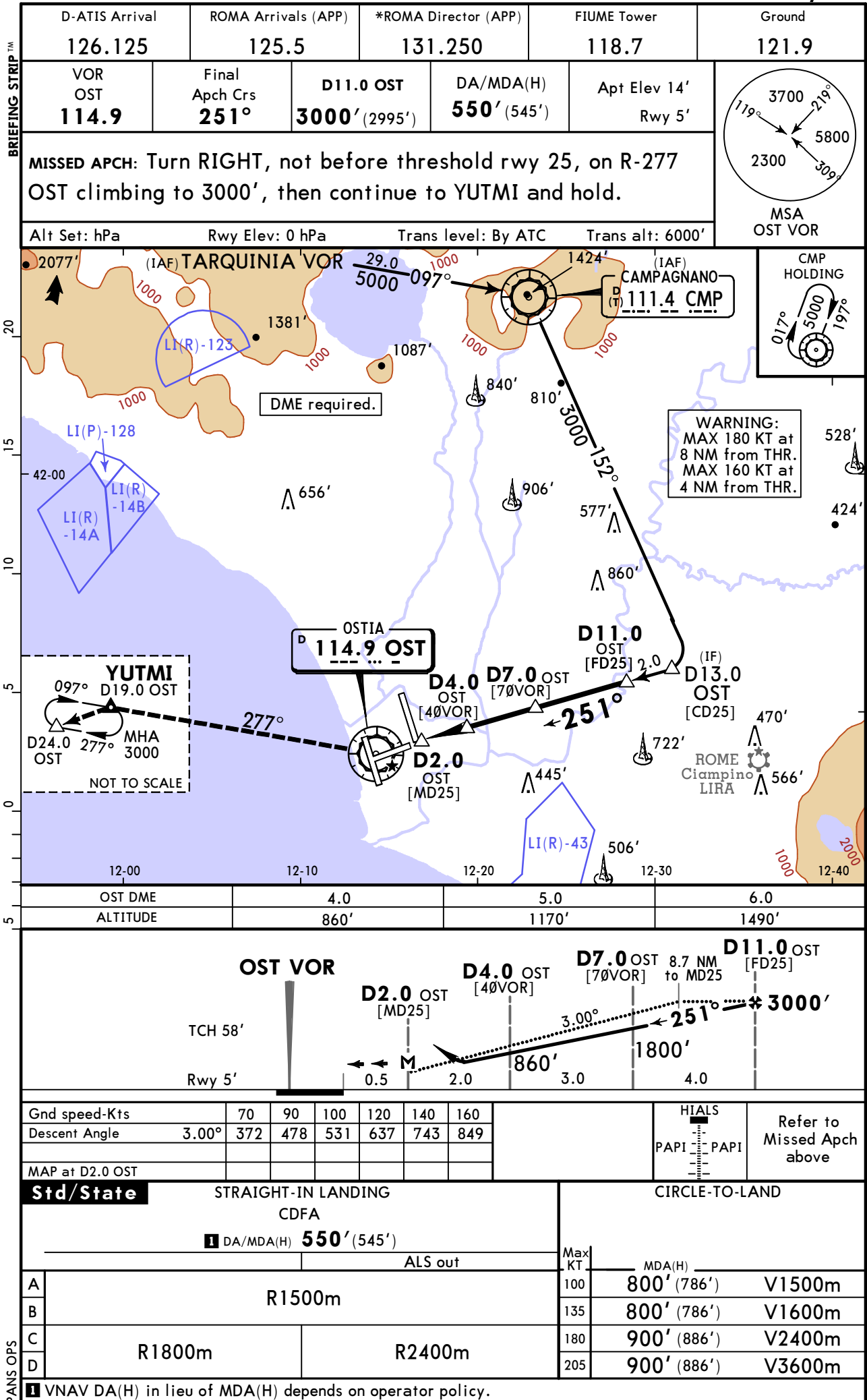
CHANGES: Missed apch, warning, new AOM format.

© JEPPESEN, 2001, 2024. ALL RIGHTS RESERVED.

LIRF/FCO
FIUMICINO

JEPPESSEN
2 AUG 24 **(13-3)** Eff 8 Aug

ROME, ITALY
VOR Rwy 25



LIRF/FCO
FIUMICINO

JEPPESEN
2 AUG 24 **13-4** Eff 8 Aug

ROME, ITALY
VOR Rwy 34L

